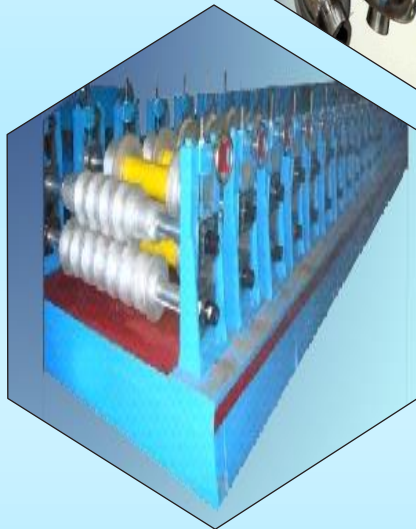




S. K. ENGINEERS

"Quality with Innovation"



"Innovative Technology in Tube Mill Industry"

About us

S.K. Engineers was established in the year 1994 by Shri Sajjan Kumar. He gained a rich experience in the field of manufacturing of M.S. and S.S. Tube Mill, M.S. & S.S. Slitting Line Machine, Cut to Length Machine, Finishing Line Equipment and parts thereof. **We have designed and manufacturing specialized Rolls for making various sections like Star type, Octagonal Type, Door Frame, all Railway open sections etc. for the first time in India.**

Mr. Rakesh Kumar who is the son of Shri Sajjan Kumar, has joined the family business in the year 2007 and has attained a rich experience of 12 years in the field of manufacturing of various types Tube Mills and parts thereof.

Owing to our customer oriented organizations, we focus towards offering premium quality products at market leading prices. All the products offered by us comply with international standards. Along with this, to fulfill the needs of the clients, we offer these products in various specifications as well as in customized range. We ensure that all these products are delivered to the clients destination within the given time period and in a safe manner. All these above mentioned factors have enabled to win the confidence of various prestigious customers.

Quality Assurance

Although we are using the latest technology and CNC machines to give high precision products to our respected customers. We are still committed to give the huge importance to the Quality control before, during and after the production. The Quality Assurance team are only committed to release the goods to our customers, when all the initial, intermediate and final inspections are passed as per the given specifications.

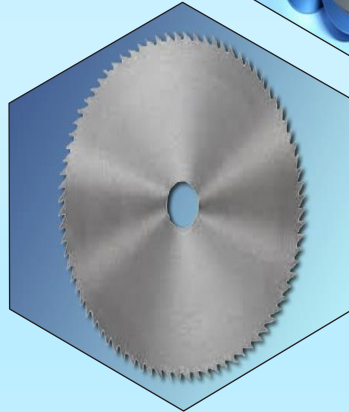
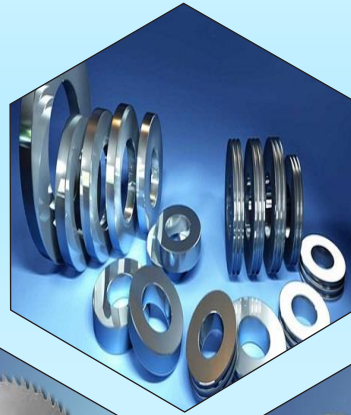
Business Type Exporter , Manufacturer , Wholesaler , Distributor , Supplier and Service Provider

Primary Competitive Advantages

- Premium quality products
- Always on-time delivery
- Cost effective solutions
- Unmatched technical expertise
- Wide market connection
- Sound business acumen

Our Products

1. MS ERW & SS Tube Mill Machine
2. MS Petra /Skelp Based Tube Mill Machine
3. MS Open Section Tube Mill
4. MS & SS Slitting Line Machine
5. MS & SS Cut to Length Machine.
6. Tube Mill Rolls
7. Other Spare Parts/Accessories of Tube Mills
8. Tube Mill Fins
9. Slitting Cutter & Separator Discs
10. COC Cutters & Holders.
11. Flying Saw Cutters
12. Cold Saw Cutters
13. All Railways Section Rolls
14. Tube Mill Shaft
15. ISI Laboratory Equipment's



MS TUBE MILL MACHINE

S. K. ENGINEER's supplies latest technology based S.S. & ERW Tube Mills with the provision of well advanced changing facility of Rolls. We have the variety of flying cut-off machines and accurate tooling to meet the requirements of general and specialized engineering, structural, Boiler, Heat Exchanger, Waterline and other ancillary applications.

We are manufacturing The Tube Mills with design giving highly efficient output and various levels of automation to suit customer's requirements in all respects. The special types of Rolls and Turks head ensure complex rounds/ hollow section production with precise quality. Cut-off machine selection is based on productivity of Tube Mill; we provide the complete solution of the same.

Features

- Normal/ Semi/ Fully Automatic Operation
- Line speed up to 72m/min
- Accurate cut lengths within + 2mm
- Highly experienced team for start-ups& initial production assistance
- Easy available of spares

Product Range



Model	TUBE OD (mm)		TUBE THICKNESS (mm)		MAX. LINE SPEED (M/mm)
	Min.	Max.	Min.	Max.	Highest Speed M/Min
SK ENGINEERS TM 2"	21.3	60.3	0.80	3.2	70
SK ENGINEERS TM 2.5"	21.3	73	0.80	4.0	70
SK ENGINEERSTM 3"	21.3	88.9	0.8	4.0	70
SK ENGINEERS TM 4"	33.4	114.3	1.0	5.6	60
SK ENGINEERSTM 6"	60.3	168.3	1.6	6.0	50
SK ENGINEERSTM 8"	88.9	219.1	1.8	8.0	40

NOTE: Above details are on standard based Tube Mills. Actually Tube Mill is a Customized Item which can be designed and manufactured according to the requirement of customer for making various thickness tubes and pipes. We can supply Tube Mill with different Strength, Speed according to the Customer Requirement.

MS SLITTING LINE MACHINE

S. K. ENGINEERS offer Slitting Lines for Hot Rolled and Cold Rolled steel strip to produce high quality of slit strips. These lines are of various designs to suit customer's requirements in terms of automation level, flexibility of operations, speed and production capacity. The capacity of these Slitting lines ranges from 300 mm to 2100 mm width and 0.3 mm to 12.0 mm thickness and coil weight up to 35 M Tons. S. K. ENGINEERS Slitting Lines produce superior quality of Slit coils with high productivity.



Product Range

Model	Strip Width	Strip Thickness	Max. Coil Weight
SK ENGINEERS SL 450	150-450	0.3-1.4	5 MT
SK ENGINEERS SL 1250	500-1250	0.4- 6.0	25 MT
SK ENGINEERS SL1500	500 – 1500	0.5 – 6.0	30MT
SK ENGINEERS SL 1600	600-1600	0.5 – 6.0	30 MT
SK ENGINEERS SL 2000	900-2000	1.0- 8.0	35 MT

CUT TO LENGTH MACHINE

S. K. ENGINEER's offers Cut to Length Line for Hot Rolled /Cold Rolled/ Stainless steel Coils to produce Sheets of superior quality. These lines are of various designs to suit customer's requirements in terms of automation level, flexibility of operations, speed and production capacity. The capacity of these lines ranges from 600 mm to 2000 mm width and 0.3 mm to 8.0 mm thickness and coil weight up to 35 M Tons. S. K. ENGINEERS cut to Length produce superior quality of Coil Sheets with high productivity & mark less.

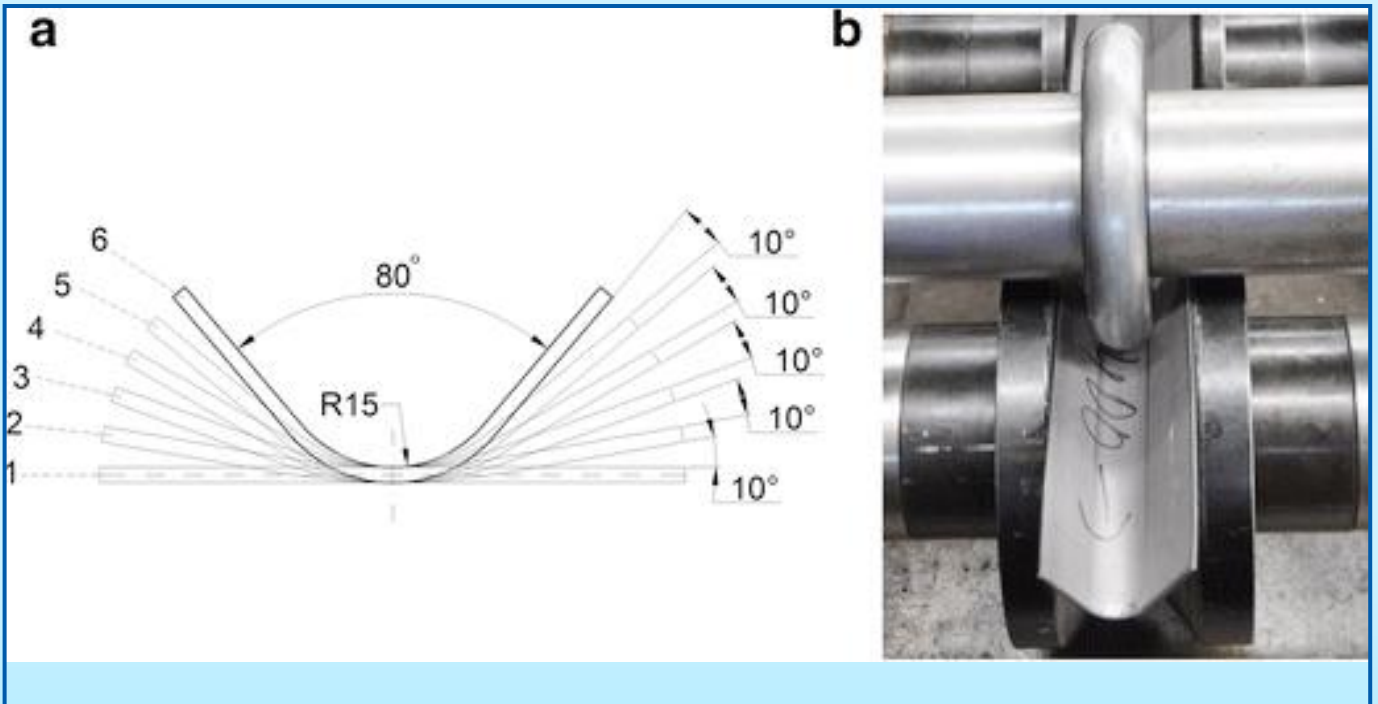
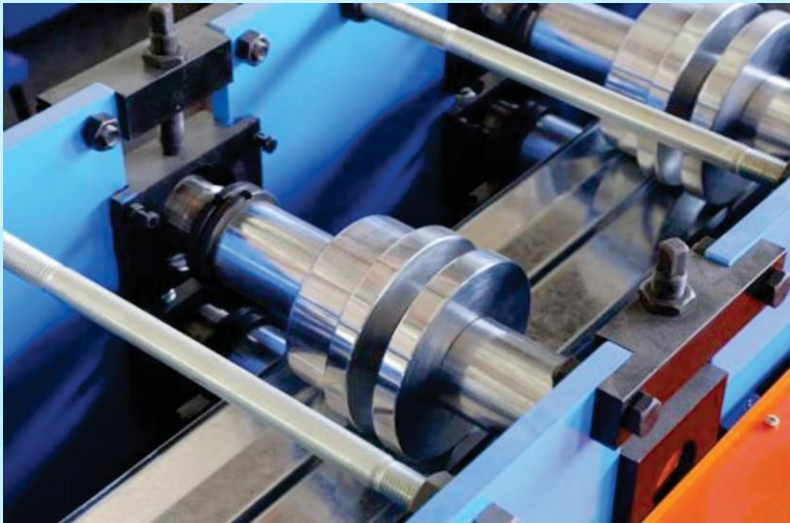


Product Range

Model	Steel Width (mm)	Coil Weight
SK ENGINEERS CTL600	100 – 600	2 – 5
SK ENGINEERS CTL1250	600 – 1250	10 – 20
SK ENGINEERS CTL1500	600 – 1500	15 – 25
SK ENGINEERS CTL 1600	600 – 1600	15 – 25
SK ENGINEERS CTL 2000	600 – 2000	15 – 35

OPEN SECTION FORMING MACHINE

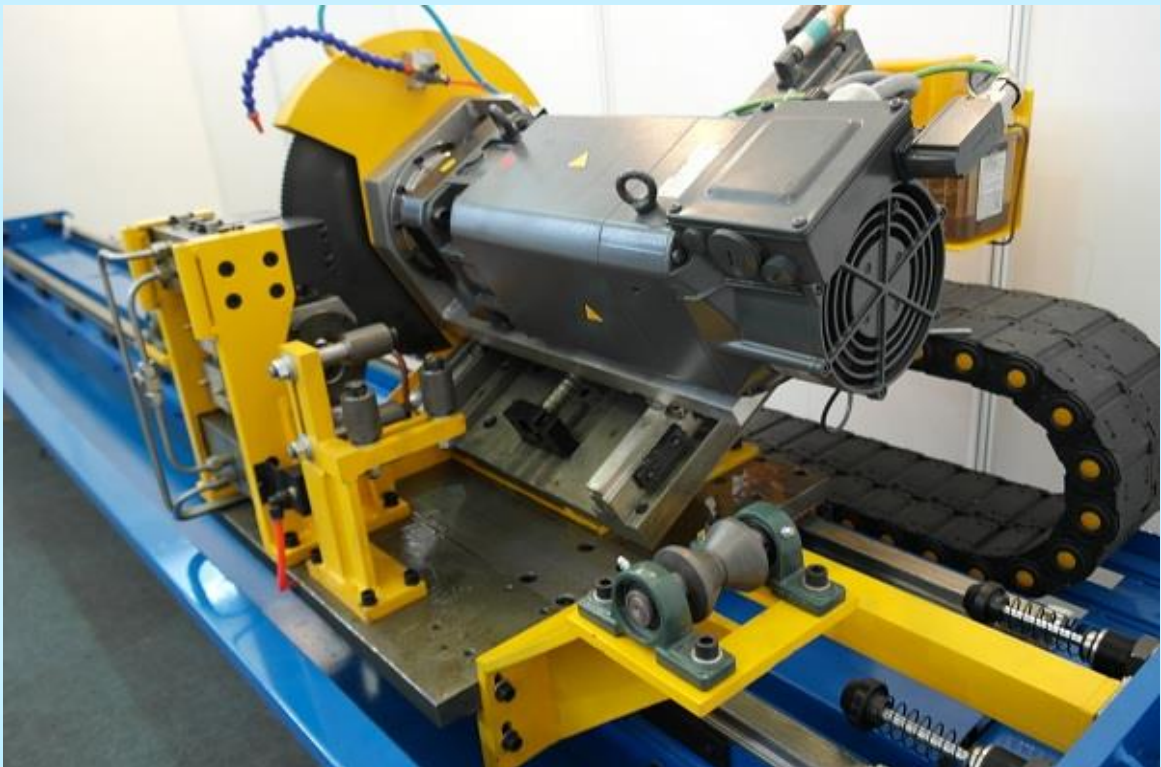
In the process of Section forming, there is a continuous bending of a long strip of M.S. or S.S., into a desired cross-section. The strip passes through sets of rolls mounted on consecutive stands, each set of rolls perform only an incremental part of the bend, until the desired cross-section (profile) is obtained. Section forming is ideal for producing constant- profile parts with long lengths and in large quantities. This is called Open Section because in this process Both Edges of Strip are Un-welded. The usage of open sections are specially for making Door Frames, C Section, L Section, Shutter Pati, Railway Section Etc.



NOTE: Section forming Machine is best for making a number of products of numerous use. We can supply Section forming Machine according to the Customer Requirement for making different types of sections.

We have designed specially following **Section Rolls for Railway** :-

- | | |
|--------------------------------------|--|
| • Corner Stanchion (110 X 110 X 8MM) | • BOXNHL (END TOP COPING) 170 X 75 X 4) |
| • End Stanchion (200 X 125 X 4 MM) | • BOXNHL ANGLE (40 X 71 X 4MM) |
| • | • BOXNHL STRINGER (100 X 51X 4MM) |
| • BOM FOR 170 BOX PROFILE | • BOXNHL DOOR (145 X 36 X 4MM) |
| • BOM FOR 110 BOX PROFILE | • BOXNHL DOOR (4 X 36 X 45MM) |
| • BOM FOR 160 BOX PROFILE | • BOXNHL (SIDE TOP COPING) 7 X 75 X 110) |
| • BOXNHL SOLE BAR | • BOXNHL ANGLE (50 X 50 X 5MM) |

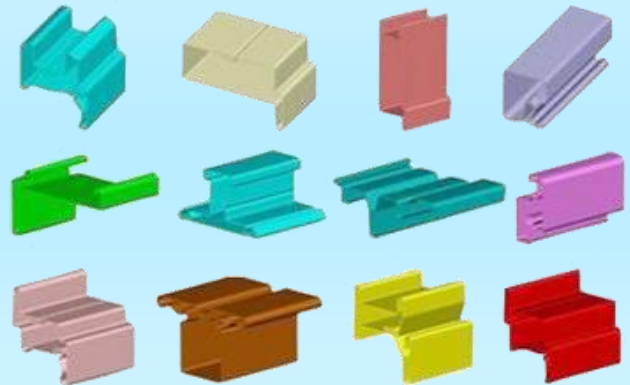


WORK ROLLS FOR ROLL FORMING MACHINE

We manufacture the Roll Sets by using superior quality and high grades materials like HCHCR/ H13 / EN31 with great accuracy and by properly machining according to profile.

Process

Raw Material > Material Testing > Forging > Annealing > Cutting > Profiling > Heat Treatment > Hardness Testing > Finish Re-Profiling > Inside Dia & Outside Dia Grinding > Inspection and Testing > Packing > Dispatch



ISI Laboratory Equipments

S.K. Engineer has complete solution of all Laboratory Equipments related to tube mill plants. We have technical competency to manufacture/ supply of equipments required to test the tube & pipes like hydro tester etc.



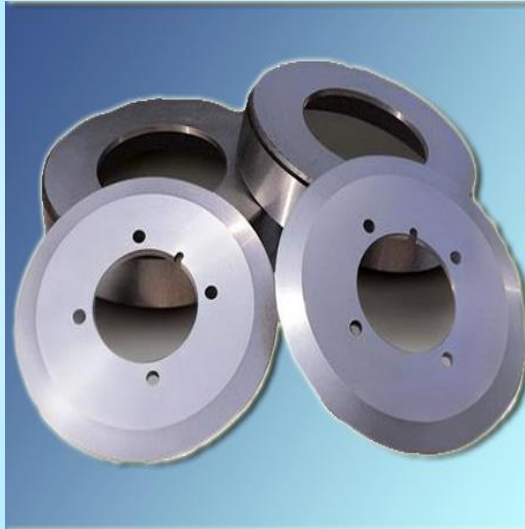
Tube Mill Roll

We are engaged in offering a wide variety of Tube Mill Roll, designed to be used in tube rolling mills. These machines are made by a team of expert professionals having a vast knowledge of this domain. We have used high-grade material for its fabrication which is procured from the reliable and experienced sources of the market. The Tube Mill Roll offered by us is known for its features such as resistant to corrosion, rust and mechanical damage without any breakage in operation. Further, clients can also avail customized rolls as per their technical specifications, design, size, and dimensions.



Tube Mill Fins

We are a well-known company in offering Stainless Steel Tube Mill Fin, which is widely renowned for its durability and high quality.



COC Cutter and Holder

We are engaged in the provision of premium quality COC Cutter(Cut off Carriage). This cutter is easily available to clients at leading market rates.

Features

- Flat shaped design
- Breakage resistance
- Shiny surface finish
- Long lasting
- Easy to use



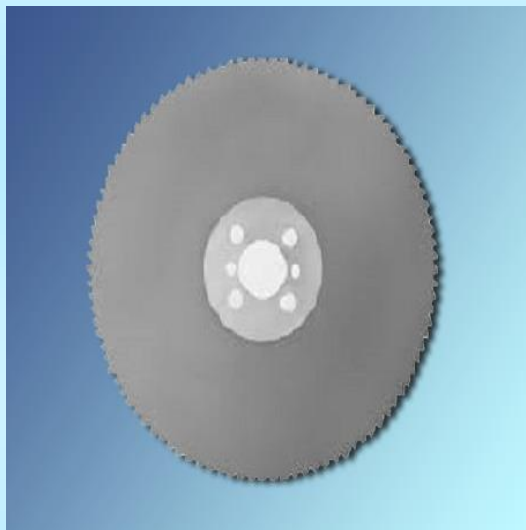
Flying Saw Cutter

The Flying Saw Cutter provided by us is easily available to clients in multiple specifications at budget friendly prices.



Cold Saw Cutter

Our organization has huge experience and knowledge for providing top quality of Cold Saw Cutter to our honored customers.



Slitting Cutter

We are a well-known company in offering Slitting Cutters, which is widely renowned for its durability and high quality.



Separator Discs

We are a well-known company in offering Separator Discs, which is widely renowned for its durability and high quality.



Railway section rolls

S.K. Engineers has technical competency to manufacture section rolls which require producing all section of railway output. These railway section rolls require high precision technology with high accuracy.



Tube Mill Shafts

We are a well-known company in offering Tube Mill Shaft, which is widely renowned for its durability and high quality. Horizontal roller shaft used for high frequency tube mill line.



Other Spare Parts and Accessories

We are manufacturing / supplying all accessories & parts of tube mill plant like slide, turk head, Stands, COC, Turk Head Assembly, Tube Mill Stand, Pipe Straighter Machine etc.



Turk Head Assembly



Tube Mill Stand

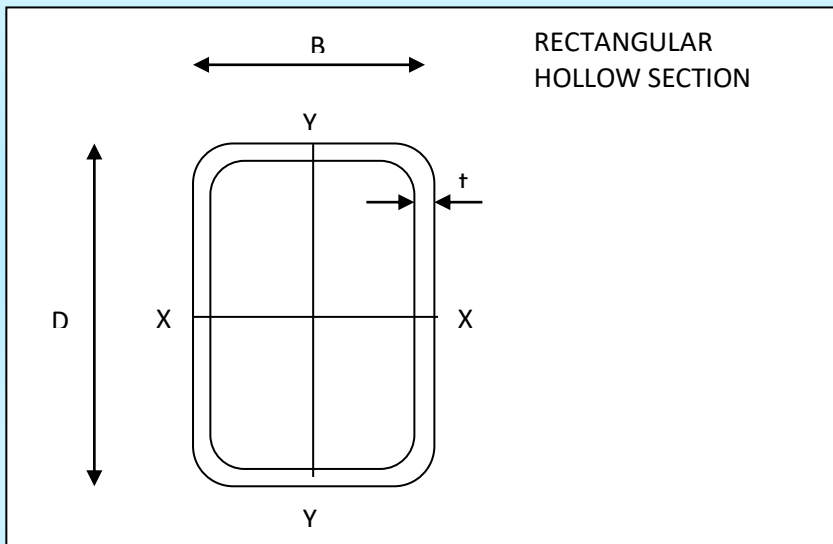
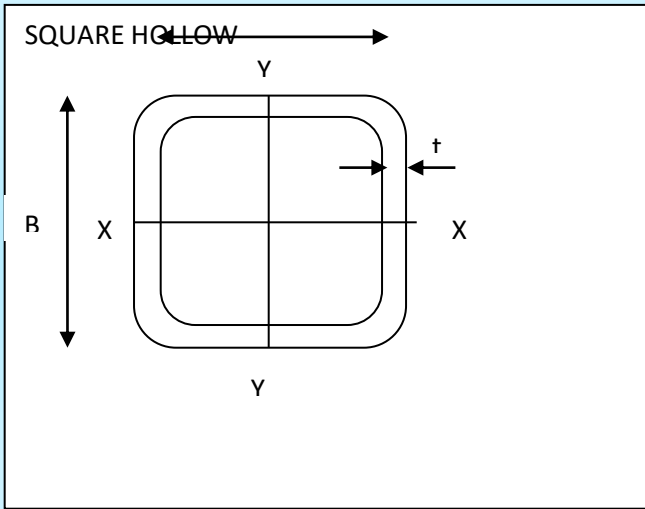


Pipe Straighter Machine

Steel Tubes for ordinary use in Water, Gas, Steam & Air

NB	Outsider Diameter (mm)	Thickness (mm)	Class	Weight		
175 (7")	193.7	4.8	L	22.4		
		5.4	M	25.1		
		5.9	H	27.3		
200 (8")	219.1	4.8	L	25.4		
		5.6	M	29.5		
		5.9	H1	31		
		8	H2	41.6		
		10	H3	51.6		
225	224.5	5.9	H	34.7		
		250 (10")	273	5.9	H1	38.9
				8	H2	52.3
300 (12")	323.9	10	H3	64.9		
		12	H4	77.2		
		6.3	H1	49.3		
		8	H2	62.3		
350 (14")	355.6	10	H3	77.4		
		12	H4	92.3		
		8	H1	68.6		
		10	H2	85.2		
		12	H3	102		

Tolerance conforming to IS : 1161-1998	
Outsider Diameter	
Up to & including 48.3 mm	+0.4 mm
	-0.8 mm
	± 1%
Thickness	
	+ Not Limited
	-10%
Weight	
Single tube (light class)	± 10%, -8%
Single tube (medium & heavy)	± 10%
For quantities per load of 10 Tons min. (Light)	± 5%
For quantities per load of 10 Tons min. (medium & Heavy)	± 7.5%



RECTANGULAR HOLLOW SECTION

AXB	1.5	2.0	2.5	2.9	3.2	3.6	4.0	4.5	4.8	5.0	5.4	6.0	8.0	10.0	12.0
	40X20														
50X25															
50X30															
60X30															
60X40															
75X50															
80X40															
100X50															
100X60															
120X60															
120X80															
150X100															
200X100															
240X120															
250X150															
260X150															
300X200															
400X200															

SK ENGINEERS also Manufacture Hydro Testing, Bend Testing Machine, ISI Laboratory Items & all other Misc Tube Mill Industry Machine.

STEEL TUBES FOR ORDINARY USES IN WATER, GAS, STEAM & AIR

Conforming to IS:1239 (Part-I) 2004

Nominal Bore (N.B.)		Outside Diameter		CLASS	Wall Thickness		NOMINAL WEIGHT		METERS / TON	
		Minimum	Maximum		MM	SWG [*]	Kg / Meters		P.E.	S & S
MM	INCH	MM	MM		MM	SWG [*]	P.E.	S & S	P.E.	S & S
15	(1/2")	21.00	21.40	L	2.00	14	0.95	0.96	1056	1046
		21.00	21.80	M	2.60	12	1.21	1.22	826	820
		21.00	21.80	H	3.20	10	1.44	1.45	694	690
20	(3/4")	26.40	26.90	L	2.30	13	1.38	1.39	725	719
		26.50	27.30	M	2.60	12	1.56	1.57	641	637
		26.50	27.30	H	3.20	10	1.87	1.88	535	532
25	(1")	33.20	33.80	L	2.60	12	1.98	2.00	505	500
		33.30	34.20	M	3.20	10	2.41	2.43	415	411
		33.30	34.20	H	4.00	8	2.93	2.95	341	339
32	(1 1/4")	41.90	42.50	L	2.60	12	2.54	2.57	394	389
		42.00	42.90	M	3.20	10	3.10	3.13	322	319
		42.00	42.90	H	4.00	8	3.79	3.82	264	262
40	(1 1/2")	47.80	48.40	L	2.90	11	3.23	3.27	310	306
		47.90	48.80	M	3.20	10	3.56	3.60	281	278
		47.90	48.80	H	4.00	8	4.37	4.41	229	227
50	(2")	59.60	60.20	L	2.90	11	4.08	4.15	245	241
		59.70	60.80	M	3.60	9	5.03	5.10	199	196
		59.70	60.80	H	4.50	7	6.19	6.26	161	160
65	(2 1/2")	75.20	76.00	L	3.20	10	5.71	5.83	175	171.5
		75.30	76.60	M	3.60	9	6.42	6.54	156	153
		75.30	76.60	H	4.50	7	7.93	8.05	126	124
80	(3")	87.90	88.70	L	3.20	10	6.72	6.89	149	145
		88.00	89.50	M	4.00	8	8.36	8.53	120	117
		88.00	89.50	H	4.80	6	9.90	10.10	101	99
100	(4")	113.00	113.90	L	3.60	9	9.75	10.00	102	100
		113.10	115.00	M	4.50	7	12.20	12.50	82	80
		113.10	115.00	H	5.40	5	14.50	14.80	69	67
125	(5")	138.50	140.80	M	4.80	6	15.90	16.40	63	61
		138.50	140.80	H	5.40	5	17.90	18.40	56	54
150	(6")	163.90	166.50	M	4.80	6	18.90	19.50	53	51
		163.90	166.50	H	5.40	5	21.30	21.90	47	46

* Standard Wire Gauge

TOLERANCE

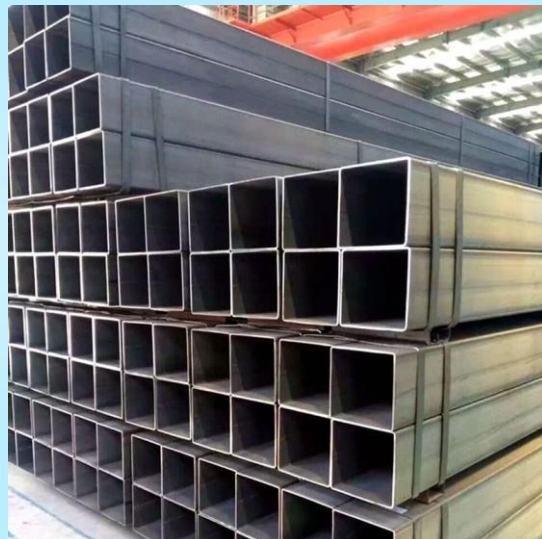
Thickness:	For quantities per load of 10 ton Min.: +/- 7.5% (Medium & Heavy series)
Light Tubes : + not limited - 8%	Chemical Composition
Medium & Heavy Tubes: + not limited - 10%	As per IS: 10748 – 2004
Weight:	Physical Properties
Single Tube : + 10% (light series) - 8%	Tensile strength : Min. 320 Mpa
Single Tube : +/- 10% (Medium & Heavy series)	Elongation % age : 20% Min. above 25 mm NB 12% Min. upto 25 mm NB
For quantities per load of 10 ton Min.: (light series) +7.5% -5.0%	Hydro Test Pressure : 5 Mpa

HOLLOW STEEL SECTIONS FOR STRUCTURAL USE, SQUARE HOLLOW SECTION (SHS)

Conforming to IS : 4923 – 1997

SHS (DxB)	THICKNESS	UNIT WEIGHT	
		Kg/Meter	Meter/Ton
MM	MM		
	2.60	1.20	833
	2.90	1.30	769
25 X 25	2.00	.36	735
	2.60	1.69	592
	3.20	1.98	505
32 X 32	2.60	2.26	442
	3.20	2.69	372
	4.00	3.19	313
38 X 38	2.00		459
	2.60	2.75	364
	3.20	3.29	304
	4.00	3.95	253
40 X 40	2.00	2.31	433
	2.60	2.92	342
	3.20	3.49	287
	4.00	4.20	238
49.5 X 49.5	2.60	3.69	271
	3.20	4.45	225
	4.50	5.95	168
60 X 60	2.60	4.55	220
	3.20	5.50	182
	3.50	5.96	168
	4.50	7.43	135
72 X 72	3.20	6.71	49
	4.00	8.22	122
	5.00	10.01	100

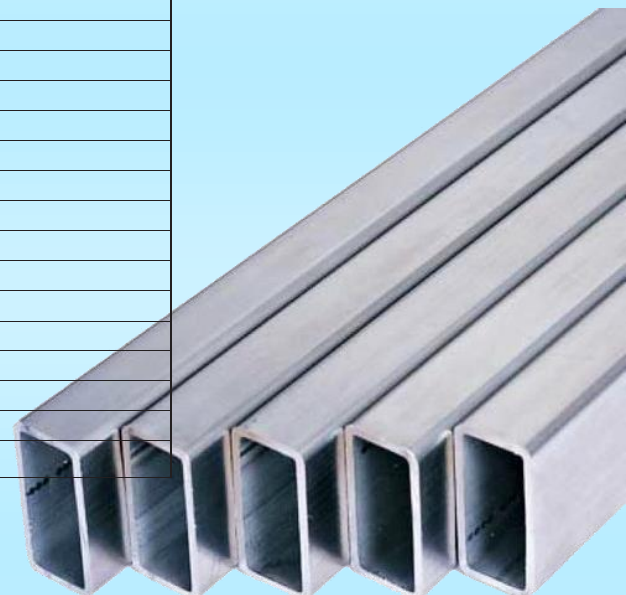
SHS (DxB)	THICKNESS	UNIT WEIGHT	
		Kg/Meter	Meter/Ton
MM	MM		
80 X 80	3.20	7.51	33
	4.00	9.22	108
	5.00	11.27	89
91.5 X 91.5	3.60	9.67	03
	4.50	11.88	84
	5.40	14.01	71
100 X 00	3.60	0.64	94
	4.50	13.08	76
	6.00	16.98	59
3.5 X 3.5	4.00	3.43	74
	5.00	16.53	60
	6.00	19.53	51
125 X 25	4.00	4.87	67
	5.00	18.33	55
	6.00	21.69	46
132 X 32	4.00	5.75	63
	5.00	19.43	51
	6.00	23.01	43
150 X 50	5.00	22.26	45
	6.00	26.40	38
	7.00	30.44	33
180 X 80	5.00	26.97	37
	6.00	32.05	31
	8.00	41.91	24



HOLLOW STEEL SECTIONS FOR STRUCTURAL USE RECTANGULAR HOLLOW SECTION (RHS)

Conforming to IS : 4923 – 1997

RHS MM	THICKNESS MM	UNIT WEIGHT	
		Kg/Meter	Meter/Ton
	2.60	2.10	476
	3.20	2.49	402
	2.00	2.15	465
	2.60	2.71	369
	3.20	3.24	309
	4.00	3.88	258
	2.60	3.73	268
	3.20	4.50	222
	4.50	6.02	166
66 X 33			
	3.20	4.45	225
	4.50	5.95	168
75 X 25			
	3.20	4.50	222
	4.50	6.02	166
	3.50	5.96	168
	4.50	7.43	135
96 X 48	3.20	6.71	149
	4.00	8.22	122
	5.00	10.01	100
90 X 60	3.20	7.01	143
	4.00	8.59	116
	5.00	10.48	95
00 X 50	3.20	7.01	143
	4.00	8.59	116
	5.40	11.21	89
	6.00	12.27	81
20 X 60	3.60	9.50	105
	4.50	11.67	86
	5.40	13.76	73
22 X 61	3.60	9.67	103
	4.50	11.88	84
	5.40	14.01	71
45 X 82	3.60	12.16	82
	4.50	14.99	67
	5.40	17.74	56
50 X 75	3.60	12.05	83
	4.50	14.85	67
	5.40	17.57	57
50 X 00	3.60	13.46	74
	4.50	16.62	60
	5.40	19.69	51
72 X 92	3.60	14.25	70
	4.50	17.61	57
	5.40	20.88	48
200 X 00	4.50	20.15	50
	6.00	26.40	38
	7.00	30.44	33
200 X 50	4.50	23.68	42
	6.00	31.11	32
	8.00	40.66	25



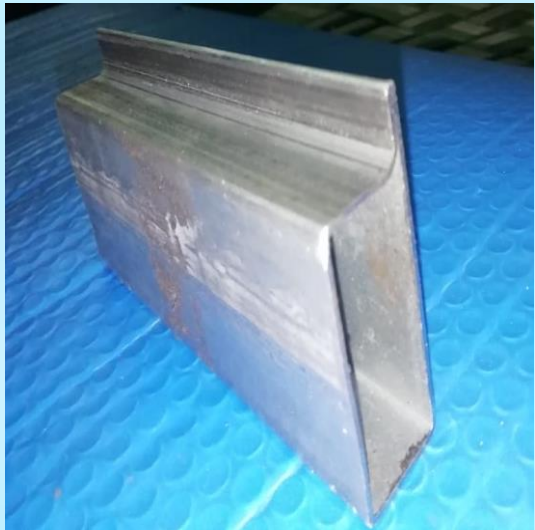
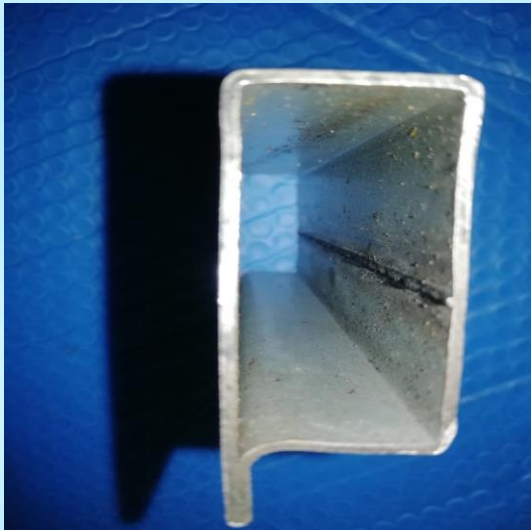
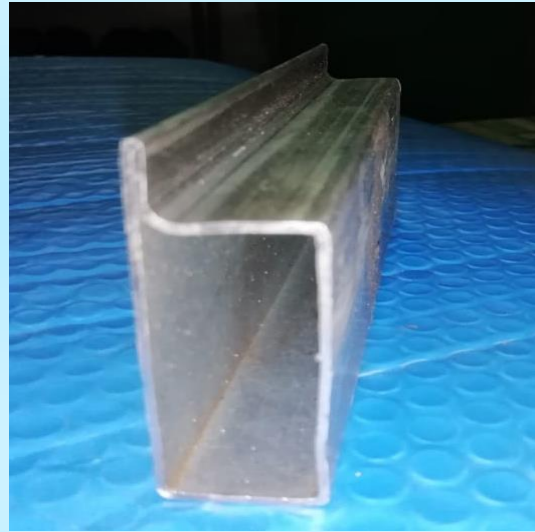
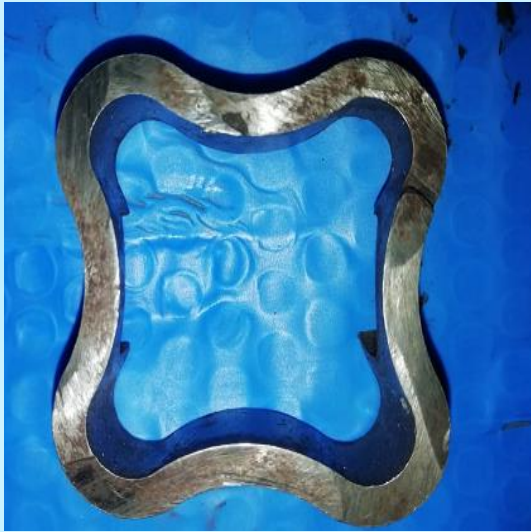
Steel Tubes for Petroleum & Natural Gas Industries for Pipe Line

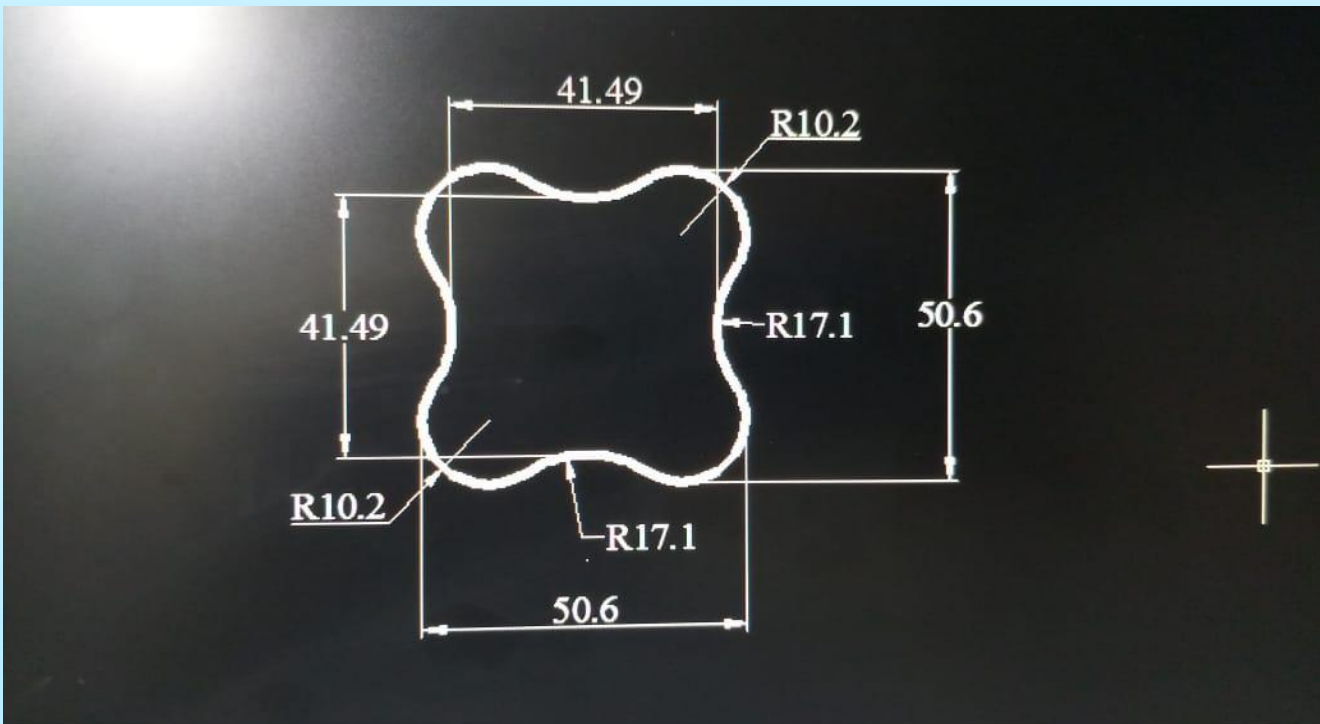
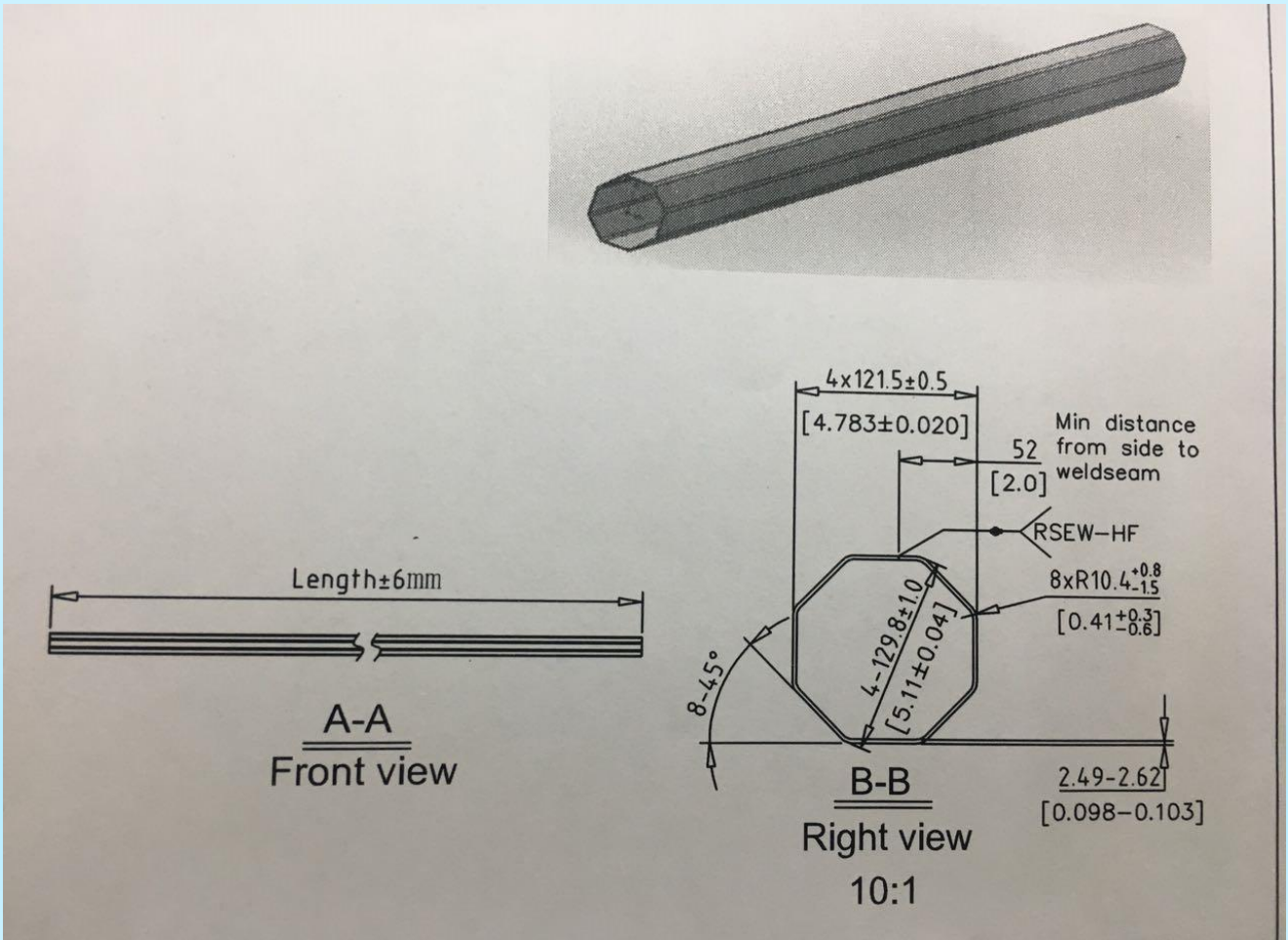
Confirming to IS : 3183 - 2007

Nominal Size NB		Outside Diameter	Thickness			
MM	Inch	MM	MM			
15.00		0.30	2.80	0.28	7.00	7.00
20.00		26.70	2.90	0.70	7.00	7.00
			3.90	2.19	17.00	17.00
25.00	(1")	33.40	3.40	2.52	7.00	7.00
			4.50	3.21	17.00	17.00
32.00		42.20	3.60	3.43	7.00	7.00
40.00		48.30	3.70	4.07	7.00	7.00
50.00	(2")	60.30			9.20	0.20
			2.8	3.97	Only L-175	
			3.2	4.51	Only L-175	
			3.6	5.03	Only L-175	
			3.9	5.42	16.2	17
			4.4	6.07	17	17
			4.8	6.57	17	17
			5.5	7.43	17	17
65	(2/2")	73		3.67	7.2	8.9
			2.8	4.85	Only L-175	
			3.2	5.51	Only L-175	
			3.6	6.16	Only L-175	
			4	6.81	13.8	15.1
			4.4	7.44	15.2	17
			4.8	8.07	16.3	17
			5.2	8.69	17	17
			5.5	9.16	17	17
80	(3")			4.5	6	6.9
			2.8	5.95	Only L-175	
			3.2	6.76	9.1	10.5
			3.6	7.57	Only L-175	
			4	8.37	11.3	13.2
			4.4	9.17	12.5	14.6
			4.8	9.95	13.6	15.9
			5.5	11.31	15.6	17

Tooling's are made of special tool steel to achieve maximum wear resistance and greater life. S. K. ENGINEERS provides complete services start from project engineering right up to commissioning, startup & initial production assistance & after sales services.







S. K. ENGINEERS

Factory and Head Office Address : 683 ,Tyagi Vihar, Sewa Nagar, Nandgram Mod, Meerut Road, Ghaziabad, Uttar Pradesh – 201003, India.

Contact Person: Mr. Sajjan Kumar +91-9810617683, Mr Rakesh Kumar +91-9818417683

Email : skengineersrolls@gmail.com, info@skengineersrolls.com,
admin@skengineersrolls.com | Website :www.skengineersrolls.com

Group of Company: SKR Rolls Pvt Ltd: E-126, Site-I, BSR Industrial Area, Ghaziabad – 201009 (UP) India